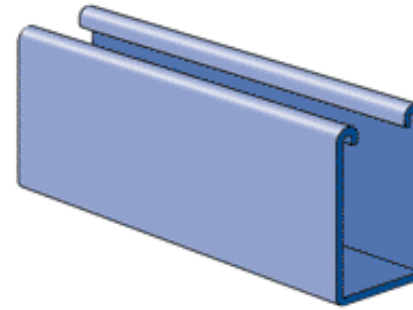
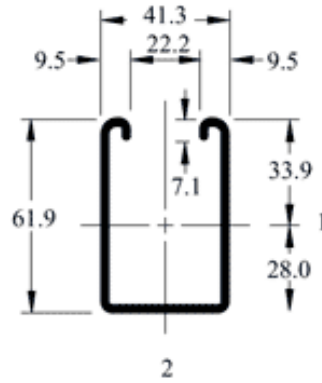
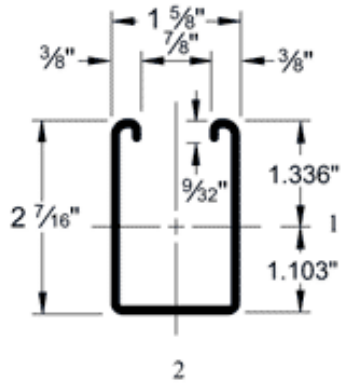


P5500 - 1-5/8" x 2 7/16", 12 Gage, Solid



Column Loading - P5500

Beam Loading - P5500

Unbraced Height (in)	Allowable Load at Slot Face (lbs)	Max Column Load Applied at C.G.				Span (in)	Max Allowable Uniform Load (lbs)	Defl at Uniform load (in)	Uniform Loading at Deflection			Lateral Bracing Reduction Factor
		K=0.65 (lbs)	K=0.65 (lbs)	K=0.65 (lbs)	K=0.65 (lbs)				Span /180 (lbs)	Span /240 (lbs)	Span /360 (lbs)	
24	4,640	13,840	12,570	10,840	9,190	24	3,270	0.04	3,270	3,270	3,270	0.99
36	3,970	11,050	9,190	7,030	5,370	36	2,180	0.09	2,180	2,180	2,180	0.89
48	3,180	8,420	6,390	4,620	3,630	48	1,640	0.15	1,640	1,640	1,420	0.77
60	2,550	6,250	4,620	3,450	2,780	60	1,310	0.24	1,310	1,310	910	0.67
72	2,120	4,790	3,630	2,780	2,260	72	1,090	0.34	1,090	950	630	0.58
84	1,810	3,890	3,010	2,330	1,910	84	940	0.47	930	700	470	0.51
96	1,580	3,290	2,580	2,020	1,650	96	820	0.61	710	530	360	0.46
108	1,400	2,860	2,260	1,770	1,440	108	730	0.78	560	420	280	0.42
120	1,270	2,530	2,020	1,580	*	120	650	0.95	460	340	230	0.40
144	1,060	2,070	1,650	*	*	144	550	1.39	320	240	160	0.36
168	920	1,750	1,380	*	*	168	470	1.89	230	170	120	0.32
*KL/r > 200						192	410	2.46	180	130	90	0.30
						216	360	3.07	140	110	70	0.28
						240	330	3.86	110	90	60	0.26

[Channel Selection Chart](#)[Related Channel Nuts](#)**Finishes:** [GR](#) [PG](#) [HG](#) [ZD](#) [PL](#) [EA](#)**Weight:**247 Lbs/100 Ft
(368 Kg/100 m)[Additional Specifications](#)**Elements of Section**Area of Section - 0.726 in² (4.7 cm²)

Axis 1-1

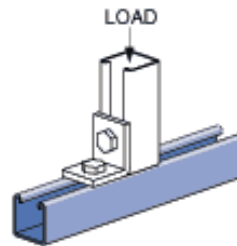
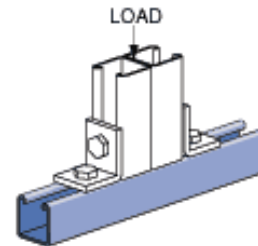
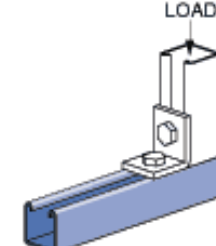
- Moment of Inertia (I) - 0.523 in⁴ (21.8 cm⁴)
- Section Modulus (S) - 0.391 in³ (6.4 cm³)
- Radius of Gyration (r) - 0.848 in (2.2 cm)

Axis 2-2

- Moment of Inertia (I) - 0.335 in⁴ (13.9 cm⁴)
- Section Modulus (S) - 0.412 in³ (6.8 cm³)
- Radius of Gyration (r) - 0.679 in (1.7 cm)

Notes:

1. Above loads include the weight of the member. This weight must be deducted to arrive at the net allowable load the beam will support.
2. Long span beams should be supported so as to prevent rotation and twist.
3. Allowable uniformly distributed loads are listed for various simple spans, that is, a beam on two supports. If load is concentrated at the center of the span, multiply load from the table by 0.5 and corresponding deflection by 0.8.
4. The lateral bracing factor should be multiplied by the load to determine the load retained based on the distance between lateral braces.

Bearing Load on Channel:Max Load
5,000 Lbs
2,268 KgMax Load
8,000 Lbs
3,629 KgMax Load
3,500 Lbs
1,588 Kg