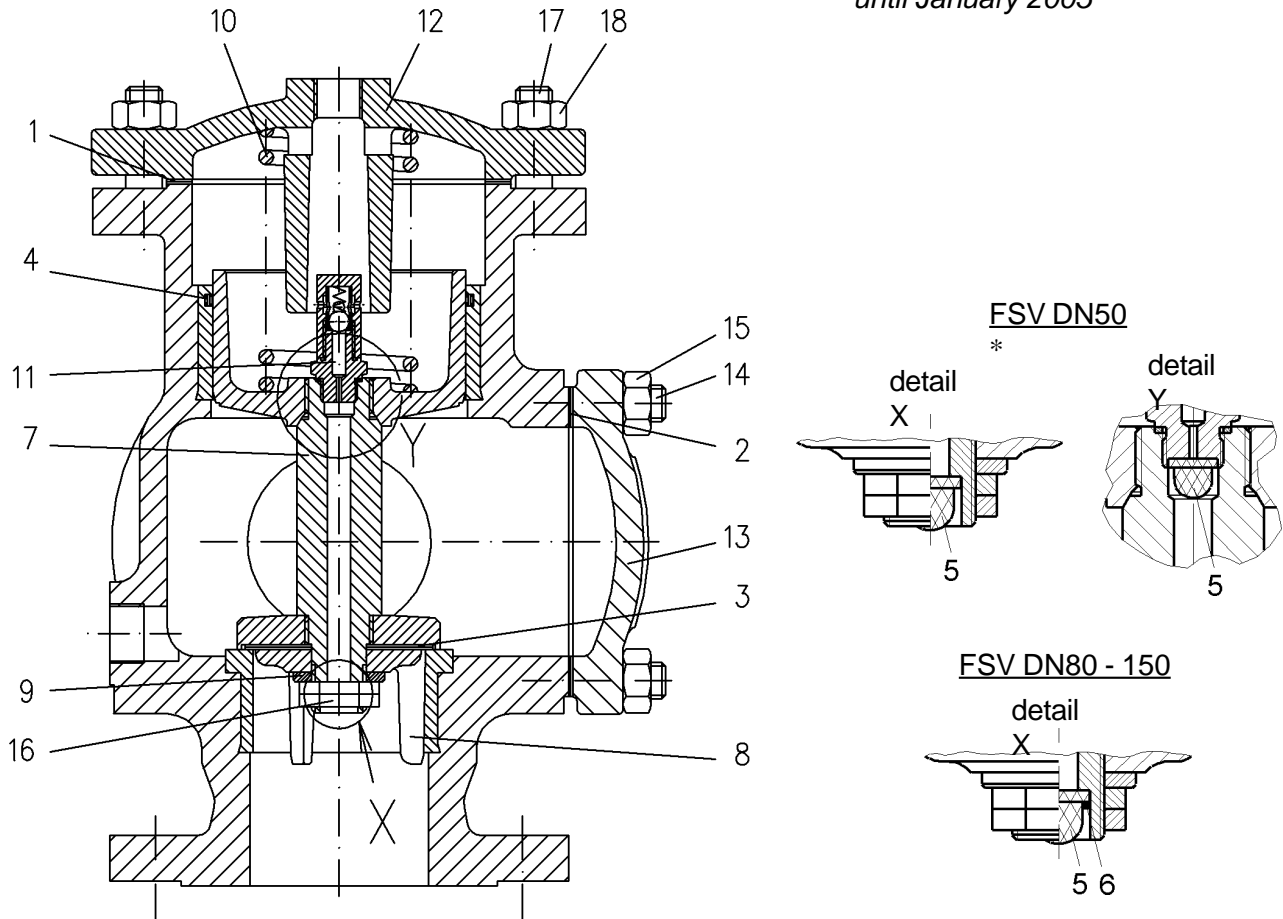


Spare parts:

Deluge valves DN50 - 150

delivery from March 1993
until January 2005



spare parts:

item	designation	order no. / dimension				quant.
		DN50	DN80	DN100	DN150	
1	gasket for cover of control chamber					
2	gasket for inspection cover					
3	gasket for valve head					
4	O-ring					
5	sieve					
6	snap ring					
-	set of gaskets (item 1 - 6)	85 8580	85 8591	85 8608	85 8610	1

* Delivery from the 1st quarter of 1995 on. For deliveries up to the 1st quarter of 1995 (FSV DN50) the piston rod (detail X) is without sieve. In these cases the non-return valve (detail Y) is with sieve.